

*Please read the following operation instructions carefully before use.

Instructions for Use

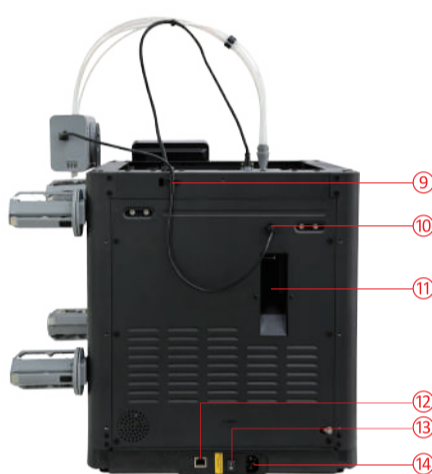
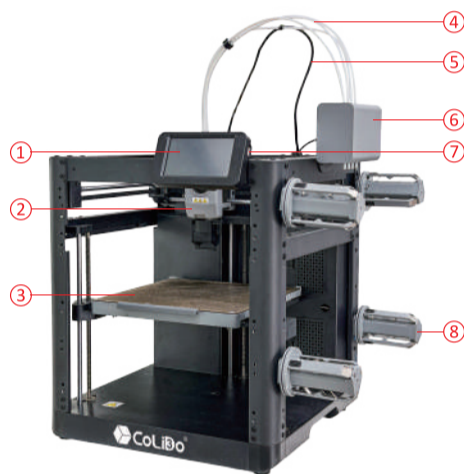
1. Please ensure the work surface of the device is clean and tidy.
2. Please ensure the device is kept away from flammable gases, liquids, and dust during operation. The high temperature generated by the device may react with flammable substances and dust in the air, potentially causing a fire.
3. Children and untrained personnel should not operate the device alone.
4. Please ensure the device is properly grounded, and do not modify the power plug. Failure to ground or incorrect grounding, as well as plug modification, will inevitably increase the risk of electric leakage.
5. Do not expose the device to damp or direct sunlight environments: damp conditions increase the risk of electric leakage, while direct sunlight accelerates the aging of plastic components.
6. Do not misuse the power cord; always use the power cord provided by CoLiDo.
7. Do not use the device during thunderstorms.
8. If the device is not in use for an extended period, turn it off and unplug the power cord.
9. During device operation, do not touch the nozzle, platform, or other areas!
10. After printing is completed, do not touch the nozzle or platform to avoid burns from high temperatures or mechanical injuries!

11. When operating the device, do not wear scarves, masks, gloves, jewelry, or other items that could easily get caught in the device!
12. Do not operate the device after consuming alcohol or medication!
13. Keep the inside of the device clean; do not drop metal objects into the slide groove beneath the print platform.
14. Promptly clean up filament debris, and it is recommended to perform this outside the device.
15. Any unauthorized modification to the device will automatically void the warranty.
16. During filament loading, maintain a minimum distance of 50mm between the nozzle and the platform. A shorter distance may cause nozzle clogging.
17. Operate the device in a well-ventilated environment.
18. Do not use the device for illegal or criminal activities.
19. Do not use the device to produce items for food storage.
20. Do not place printed models in your mouth.
21. The ideal indoor temperature is between 15–30°C; humidity should be between 20–70%.

01 Device Introduction

Machine Parameters

1. Device Name: CoLiDo SR2	8. Print Speed: 10–300mm/s	14. Net Weight: 11.4kg	22. Power Loss Resume: Supported
2. Number of Nozzles: 1	9. Maximum Acceleration: 20000mm/s ²	15. Print Connection Methods: USB/Wi-Fi/Ethernet	23. Smart Touch LCD Screen: 4.3 inches
3. Print Accuracy: ±0.1mm [tested on 100mm cube]	10. Maximum Travel Speed: 600mm/s	16. Operating Temperature: 15–30°C	24. Print Platform: PEI Steel Plate
4. Positioning Accuracy: X/Y-axis: 0.0125mm, Z-axis: 0.0025mm	11. Maximum Nozzle Temperature: 300°C	17. Compatible Operating Systems: Windows 7/8/10/11; macOS 10.9 and above	
5. Layer Thickness: 0.1–0.4mm	12. Power: Input: AC 100–120V/200–240V, 50/60Hz, 650W	18. Slicing Software: CoLiDo AMS	
6. Print Volume: 220×220×220mm	13. Device Dimensions: 363×363×413mm (without display, without filament holder) 363×402×448mm (with display, without filament holder)	19. Maximum Platform Temperature: 110°C	
7. Nozzle Diameter: 0.4mm (default) [optional: 0.6/0.8/0.25mm]		20. Bed Leveling: One-click Auto Leveling	
		21. Filament Runout Detection: Supported	



- | | |
|-----------------------|---------------------------------|
| 1. Display Screen | 8. Filament Holder |
| 2. Nozzle | 9. Cable Clamp |
| 3. Print Platform | 10. IFS Module Connection Cable |
| 4. 4-in-1 Bowden Tube | 11. Filament Outlet |
| 5. Nozzle Cable | 12. Ethernet Port |
| 6. IFS Module | 13. Power Switch |
| 7. USB Port | 14. Power Connector |

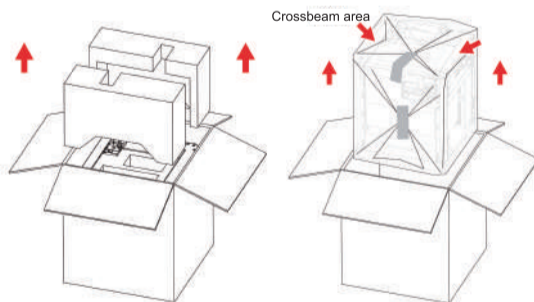
02 Accessory List

Physical Inventory

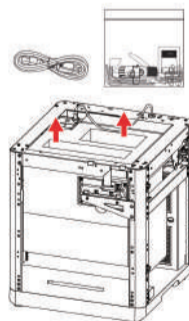
1. Consumables x 4	5. Four-color module (IFS) x 1	9. Water-based adhesive x 1	13. Cross-head screwdriver x 1
2. Power cable x 1	6. Consumable holder x 4	10. Internal hex wrench x 3	14. Lubricant x 1
3. IFS connection cable x 1	7. M3×6 screws x 6	11. Diagonal pliers x 1	
4. Installation mounting plate x 1	8. Wire clamp x 1	12. Pin tool x 1	

03 Product Unboxing

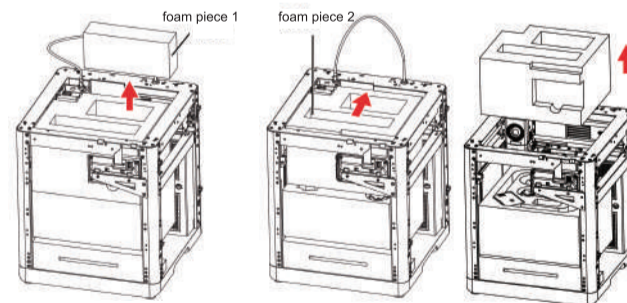
1. Open the cardboard box, remove the top foam padding and the quick-start after-sales service card. With both hands, grip the left and right crossbeams on the top of the machine, lift the machine out, place it on a level desktop, and remove the packaging bag and tape.



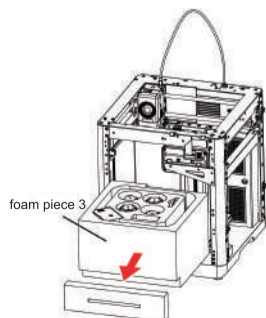
2. Take out the power cable and tool kit from inside the cavity protective foam.



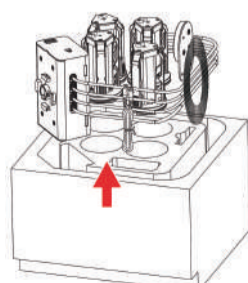
3. First remove the side foam piece 1, then push foam piece 2 backward, and lift it upward to remove.



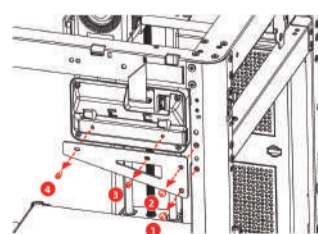
4. Pull out the lower foam piece 3 outward.



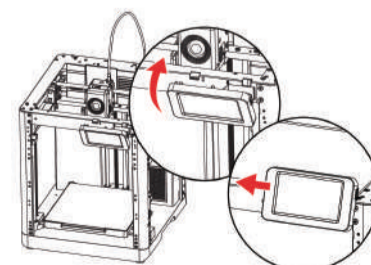
5. Remove the parts inside the foam, including: Four-color Module (IFS), IFS connection cable, installation mounting plate, 4-in-1 Bowden Tube, 4 small rolls of filament, and 4 filament holders.



6. Remove the screws in numerical order, then remove the support sheet metal component.



7. Tilt the display screen upward at an angle (approx. 30 degrees), then push it to the left as indicated by the arrow to lock it onto the printer's clasp.

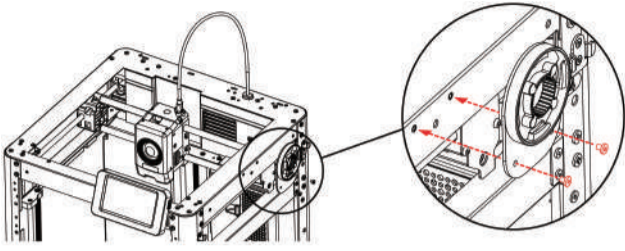


*Please read the following operation instructions carefully before use.

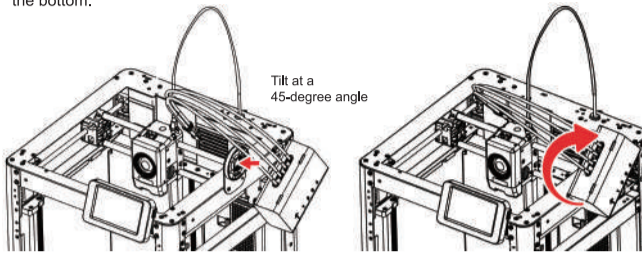
04 Device Installation

4.1 Four-Color Module (IFS)

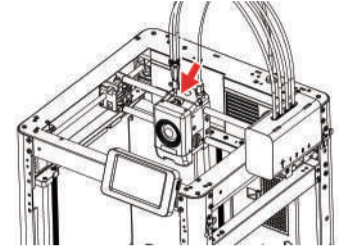
1. Secure the mounting plate to the side of the device using two M3×6 screws.



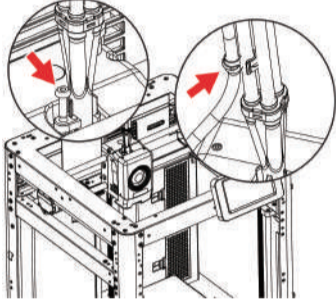
2. Install the IFS four-color module as shown in the figure: tilt it 45 degrees upward toward the mounting plate, rotate it 45 degrees to the right, and snap it into place on the mounting plate. After installation, the four short guide wire tubes of the IFS should be positioned at the bottom.



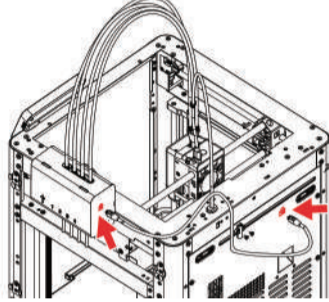
3. Insert the guide wire tube assembly into the print head.



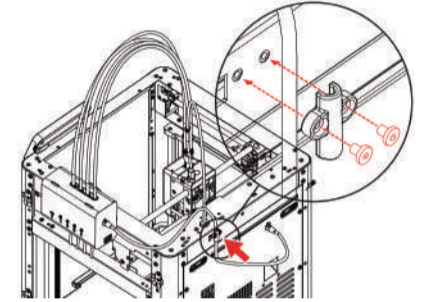
4. Secure the 4-in-1 bowden tube with M3×6 screws. Connect the print head cable to the guide wire tube using the clip connector.



5. Connect the IFS data communication cable by inserting the cable into the port on the four-color module and the corresponding port on the back of the device.

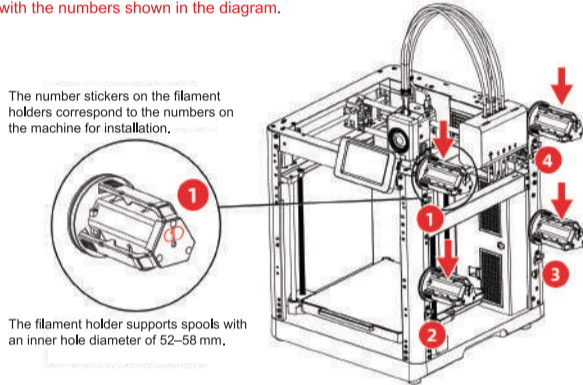


6. Fasten the cable clamp using two M3×6 screws.



7. Install the filament holder by snapping it onto the side mounting clip and pressing down firmly to secure it in place.

Note: During device operation, the filament retraction directions on the two sides are different. Therefore, install the filament holders according to the corresponding numbers. The filament holders and IFS filament input channels must be installed in the positions marked with the numbers shown in the diagram.

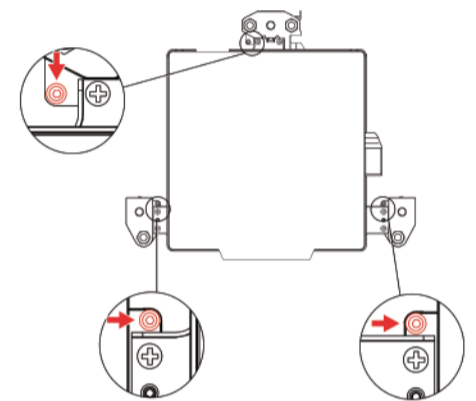


4.2 Unlocking the print platform

Precautions: Please ensure that the print platform is free of any foreign objects!

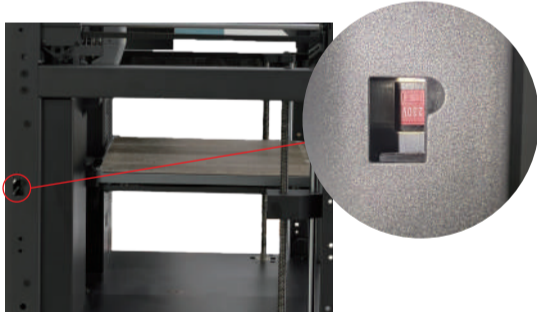
Use a 2.5mm hex key to remove the three screws shown in the diagram below (refer to the arrow markings on the machine), thereby unlocking the print platform.

*The view shown is a top-down perspective.

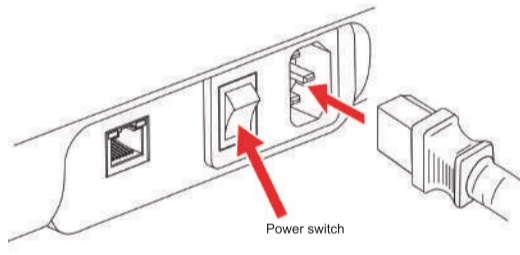


05 First Print

Note: Before powering on, ensure that the local voltage matches the machine's rated voltage to prevent damage to the device from voltage mismatch.



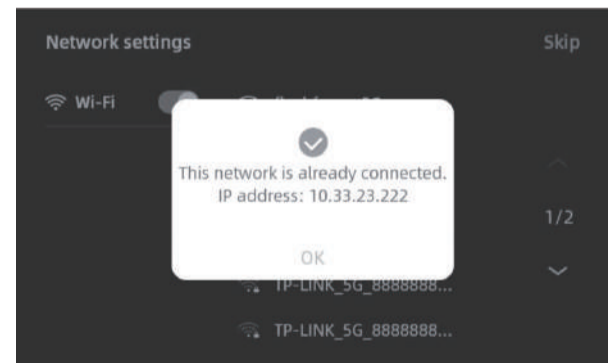
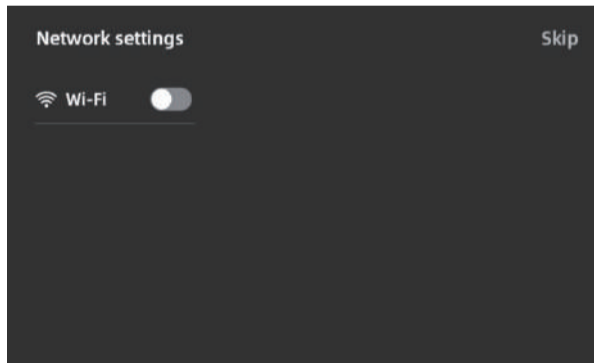
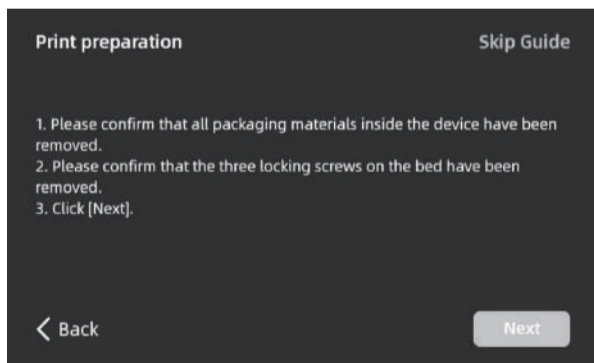
1. Plug in the power cable, turn on the power switch to light up the screen.



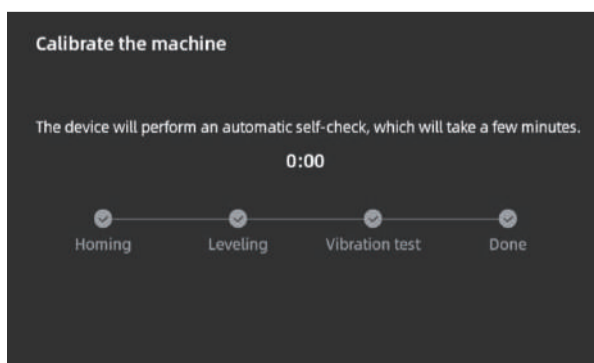
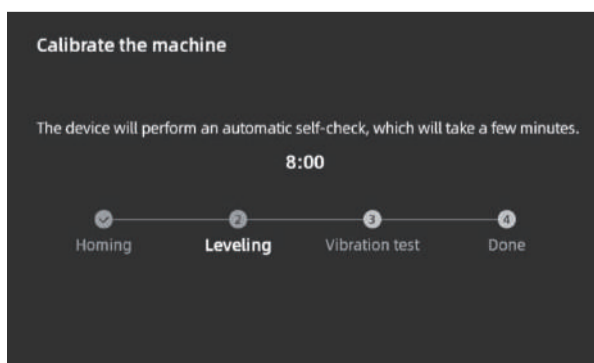
2. Follow the on-screen startup guide to complete the interface language selection.



3. Follow the prompts to turn on the Wi-Fi switch and connect to a network. A confirmation pop-up will appear after successful connection. Then bind the printer as guided.



4. Click [Next]; the machine will perform its first calibration. Vibration and noise during calibration are normal. Note: Place the machine on a stable, level surface and do not move it during calibration.



All rights reserved © Print-Rite

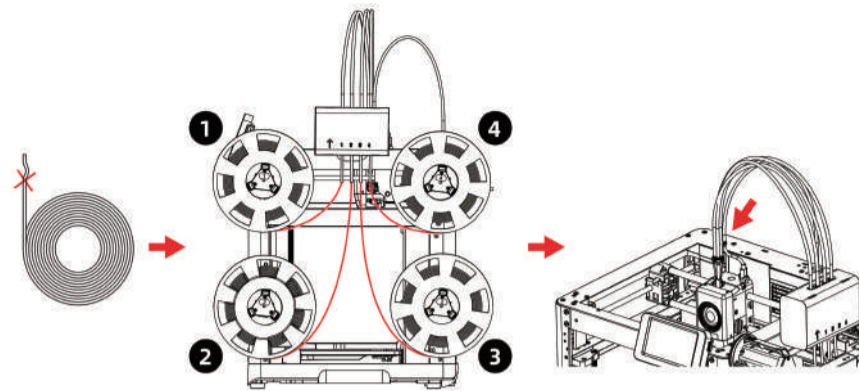


*Please read the following operation instructions carefully before use.

5. Follow the on-screen startup guide to complete filament loading:

5a. Cut off the bent tip of the filament. Place the filament spool on the filament holder. Insert the four filaments into feed ports 1-2-3-4 as shown in the feeding direction diagram, passing through the feed wheel. The device will detect the filament and automatically feed it into the tube one by one. The screen will pop up a "Filament auto-loading" prompt.

Note: The included small filament rolls are only for testing the first model. It is recommended to install full-size spools directly.



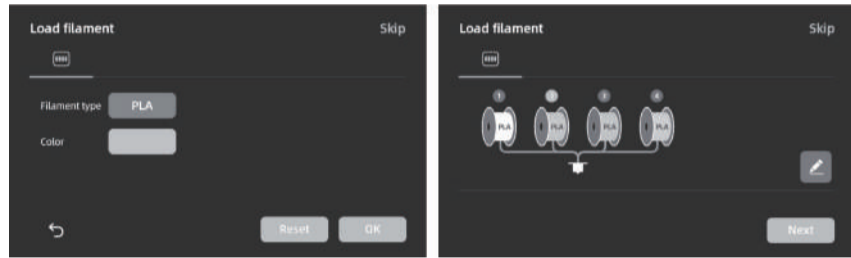
Cut off the bent tip of the filament;

The numbers 1, 2, 3, and 4 marked on the four-color module indicate the filament channel numbers;

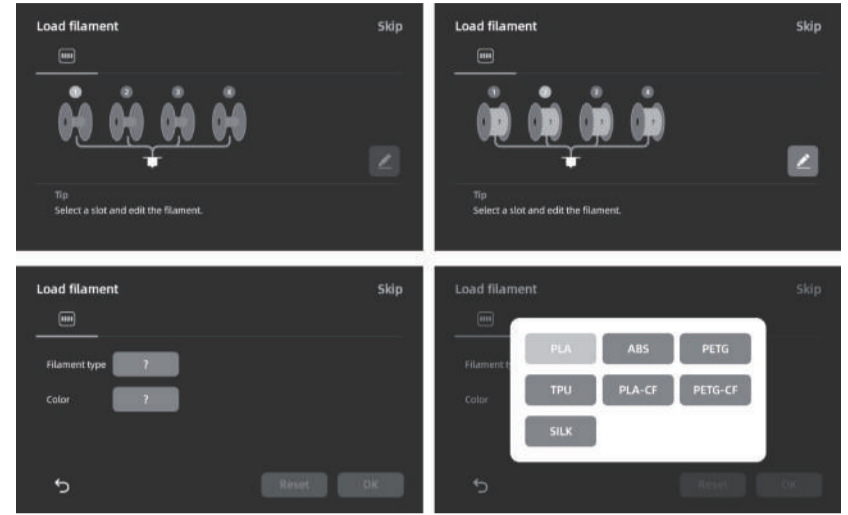
The filament will then be automatically fed to the top of the 4-in-1 Bowden tube.

5c. You may apply a layer of adhesive evenly across the entire print platform. Note: Applying adhesive helps improve model adhesion.

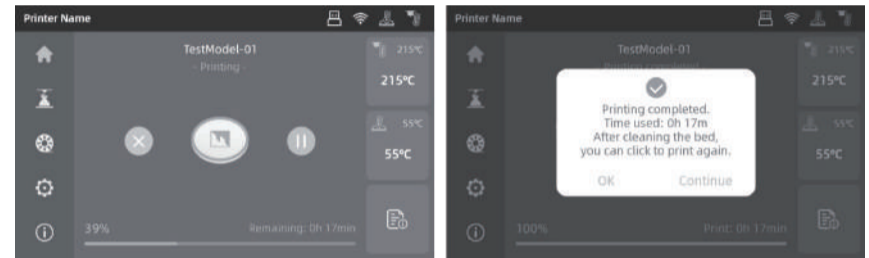
5d. Click [Next]; the machine will start printing the built-in test file (the configuration parameters for this file use PLA material).



5b. Edit filament: After loading, select filament channels 1-4 one by one, click the [edit] button, and choose the corresponding filament type and color. For first-time use, select PLA.



6. After printing is complete, remove the model and clean the platform.

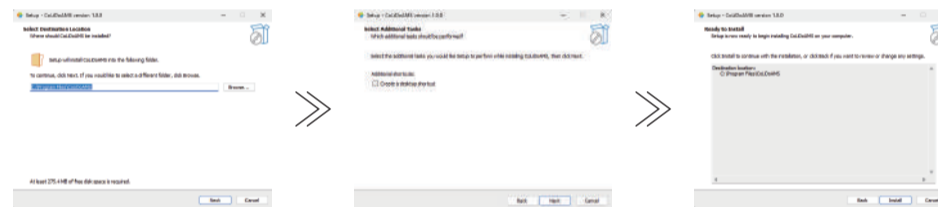


06

Software Installation and Usage

6.1 Slicing Software Installation

- Double-click to open the CoLiDo AMS slicing software installation package;
- Select or use the default installation location, then click "Next";
- Based on personal preference, choose whether to add a desktop shortcut, then click "Next";
- Confirm the installation information again and click "Install";
- Installation complete.



6.2 Model Selection

6.2.1 Configuration Parameter Description:

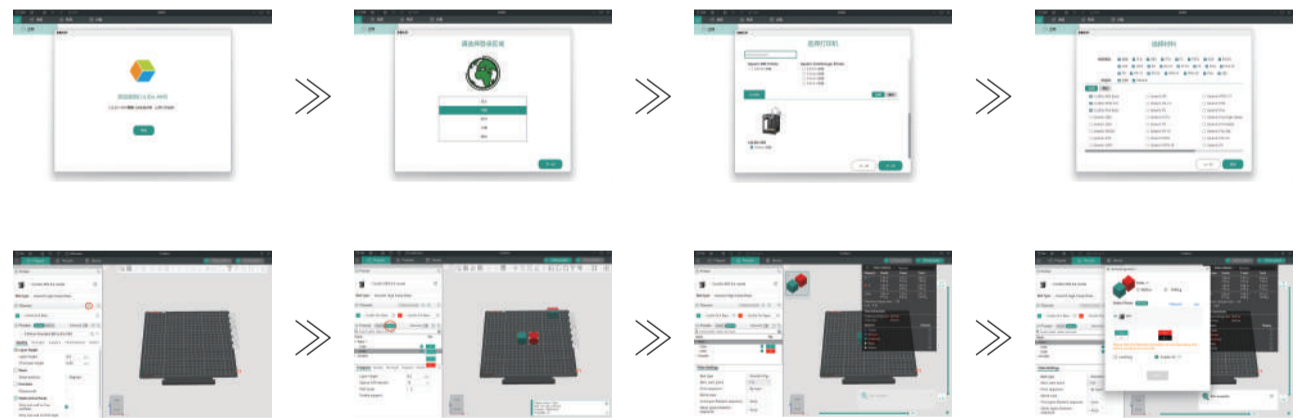
These configuration parameters apply to the model: CoLiDo SR2; CoLiDo AMS installation version: 1.0.1 or higher.

6.2.2 Operating Systems Compatible with CoLiDo AMS:

Windows 10 or later, 64-bit.

6.2.3 Initial Setup of CoLiDo AMS

- After installation, open the software for the first time and click "Start" to enter the configuration wizard;
- Select your region;
- Choose the printer(s) you want to add and check the corresponding box(es);
- Select required materials; by default, select all CoLiDo brand filaments;
- Load the model:
 - If using the AMS system, first add the required materials in the material section.
 - Bind materials to corresponding models (double-click on filament under the "Object" tab to bind different filaments).
 - After processing the model, select "Slice Single Disk", then click "Print Single Disk".
 - On the "Send Print Job To" page, match the required filaments of the model with those installed on the printer, and enable "IFS" (recommended to select bed leveling when sending print job).
 - Click "Send" to start printing.
- Export the G-code file as needed.



6.2.4 Changing Software Language

- Click the icon in the menu bar and select "Preferences";
- In the pop-up window, go to the "Language" tab, select the desired language, and restart the software.



07

LAN Connection Printing

Note: The printer and the computer must be connected to the same local area network (LAN), otherwise the connection will fail.

- To connect the printer in LAN mode, enable [Network Mode] → [LAN Mode] on the printer.
- In the slicing software device page, click [+] and locate the corresponding printer.
- Select the appropriate printer and enter the Device ID shown on the printer to complete the connection.



All rights reserved © Print-Rite

