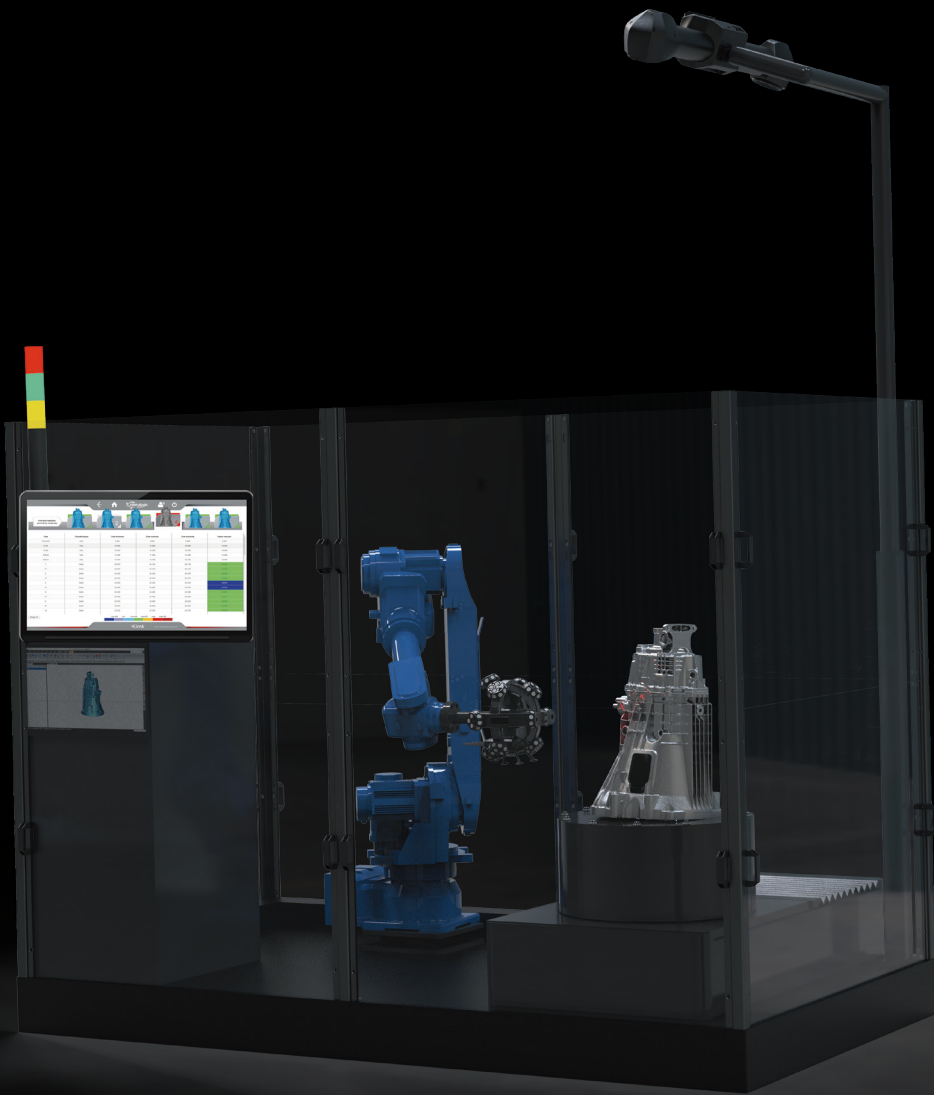


AUTOSCAN-T 3D System

Unmanned Automatic 3D Inspection Solution



Technical Parameter

| Type | | TrackScan-P30 | TrackScan-P42 |
|---|----------------------------|---|--------------------------|
| Scan mode | Ultra-fast scanning | 11 blue laser crosses | 17 blue laser crosses |
| | Hyperfine mode B | 7 blue parallel laser lines | |
| | Deep hole scanning | 1 extra blue laser line | |
| Laser lines in total | | 30 | 42 |
| Accuracy | | 0.025 mm | |
| Measurement rate | | 1,200,000 measurements/s | 1,900,000 measurements/s |
| Scanning area | | 310 mm × 350 mm | |
| Laser class | | Class II (eye-safe) | |
| Resolution | | 0.020 mm | |
| Volumetric accuracy | 9.1 m³ | 0.064 mm | |
| | 16.6 m³ | 0.078 mm | |
| Volumetric accuracy (With MSCAN-L15 photogrammetry system) | | 0.044 mm + 0.015 mm/m | |
| Portable CMM T-Probe | Optional | Support | |
| | Single point repeatability | 0.030 mm | |
| Part size range (recommended) | | 200 ~ 6000 mm | |
| Stand-off distance | | 300 mm | |
| Depth of field | | 320 mm | |
| Output formats | | .stl, .ply, .obj, .igs, .wrl, .xyz, .dae, .fbx, .ma, .asc or customized | |
| Operating temperature range | | 5 ~ 40°C | |
| Interface mode | | USB 3.0 | |
| Patents | | CN204329903U, CN104501740B, CN104165600B, CN204988183U, CN204854633U, CN204944431U, CN204902788U, CN105068384B, CN105049664B, CN204902784U, CN204963812U, CN204902785U, CN204902790U, CN106403845B, CN209197685U, CN209263911U, CN106500627B, CN106500628B, CN206132003U, CN211121096U, US10309770B2, KR102096806B1 | |

SCANTECH™

TRACKSCAN 3D System

Intelligent 3D Tracking
With Unrivaed-fast Measurement



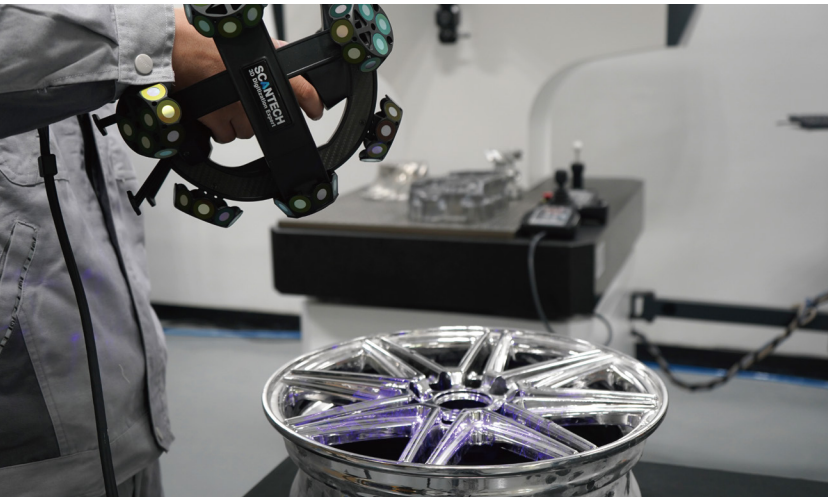
SCANTECH (HANGZHOU) CO., LTD
Building 12, No.998, Wenyi West Road, Yuhang District, Hangzhou,
Zhejiang Province, China
Tel: 0086-571-85852597 Fax: 0086-571-85370381
E-mail : info@3d-scantech.com
Website : www.3d-scantech.com

SCANTECH™

Authorized Distributor

Copyright ©

SCANTECH (HANGZHOU) CO., LTD



Strong Anti-interference Capability

Easily capture 3D data for shiny and black surface; strong anti-interference capability of environment, vibrations and thermal variations.



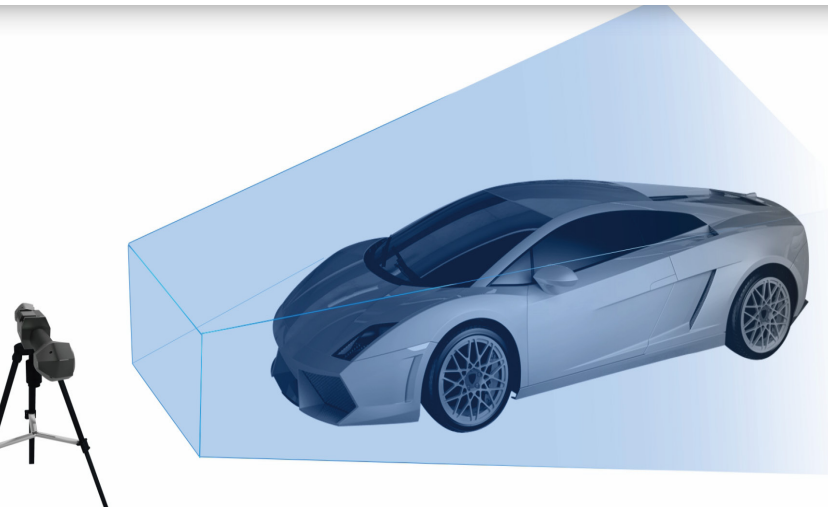
Accurate Composite Positioning

TrackScan-P42 supports modes of camera tracking and marker tracking. In the blind area of E-Track, the scanner can recognize the markers to keep working.



Wireless Portable CMM

Portable CMM T-Probe is designed for getting precise 3D data of holes and hidden points, with high single point repeatability of 0.030 mm.



Extendable Measuring Volume

Measuring range is dynamically extended by adjusting the positions of E-Track, meanwhile the accuracy still gets maintained.

TRACKSCAN

TrackScan-P42 3D system adopts intelligent optical tracking measurement technology and high-quality optical equipment. It carries out ultra-high precision dynamic 3D measurement without markers. This 3D system is widely applied to quality control, product development, reverse engineering, etc.

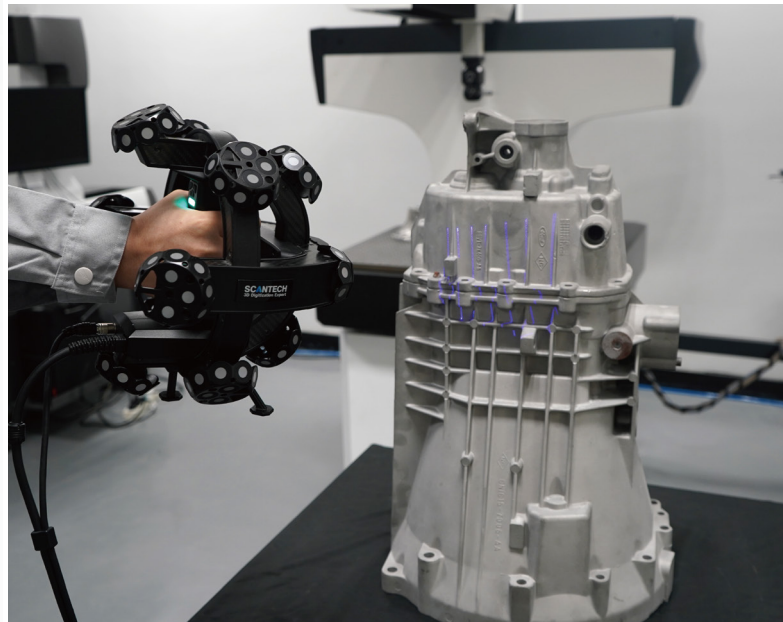
By freely switching multiple working modes, TrackScan-P42 caters to different scanning situations. 17 crossed blue laser lines enable ultra-fast scanning rate of 1,900,000 measurements/s and smooth experience. 7 parallel blue laser lines work for detail capturing. Single blue laser line aims to fast collecting 3D data of deep holes and dead angle positions.

The equipped wireless portable CMM T-Probe delivers flexible measurement, and precisely captures high-precision 3D data of gaps, hole positions, grooves and complex surface. By working with robot-arm, TrackScan-P42 can also realize intelligent online automated 3D inspection.

A TrackScan P42 3D scanner is shown from a side perspective. Six blue lines point to specific features: one points to the sensor head and is labeled 'Anti-dust & fog markers', one points to the handle and is labeled '17 crossed blue laser lines', one points to the handle and is labeled '7 blue parallel laser lines', one points to the handle and is labeled 'Aerospace-grade materials', one points to the handle and is labeled 'Ergonomic design', and one points to the handle and is labeled 'Single point repeatability 0.030 mm'.

Intelligent Tracking Without Markers

With intelligent optical tracking measurement, TrackScan-P42 3D system delivers instant scanning without markers, greatly improving work efficiency and decreasing cost.



Unrivaled-fast & Detail-maker

17 crossed blue laser lines enable ultra-fast scanning rate of 1,900,000 measurements/s and smooth experience. 7 parallel blue laser lines work for detail capturing. Single blue laser line aims to fast obtain 3D data of deep holes and dead angle positions.

