

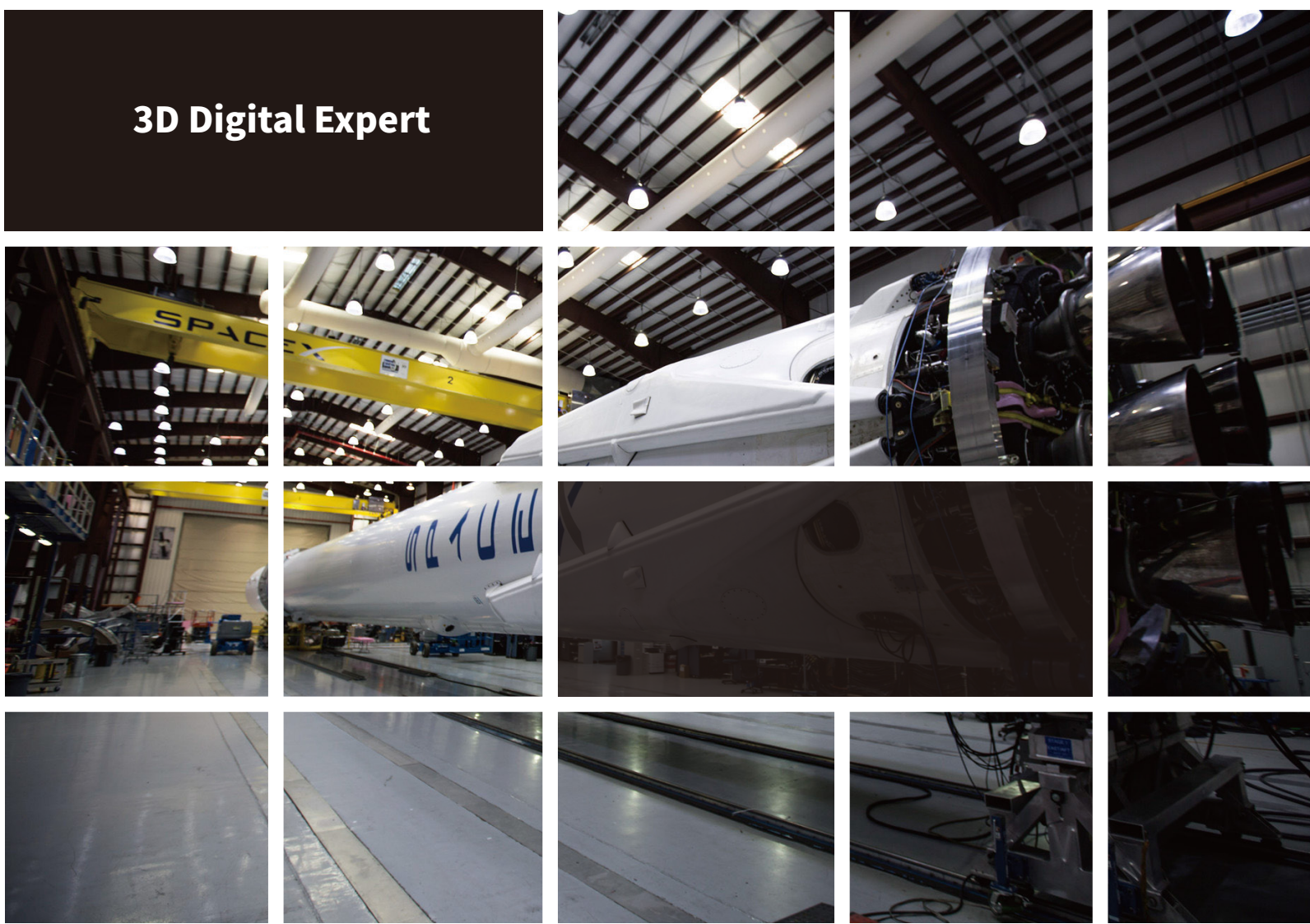
Company Introduction

SCANTECH is one of the earliest high-tech companies starting to research and develop handheld 3D visual measurement devices across the world. Leveraging its profound technological prowess, SCANTECH has established strategic partnerships with a number of world-class companies and reached cooperation for joint R&D centers and co-development plans with multiple optical metrology companies in Europe. SCANTECH products are sold to more than 50 countries and regions, serving over 5000 enterprises. The presence of our distributors and international sales and technical support teams has been expanded all across the globe, providing industrial frontier 3D measurement solutions for prominent enterprises and research institutions like Boeing, NASA, COMAC, BMW, Volkswagen, GM, Apple, Huawei, Siemens, JCB and Sany.

SCANTECH has been gaining rapid growth ever since the establishment due to our continuous input in R&D and management, as well as the attraction of top-notch talents. R&D personnel account for 50% of the company staff, among them, the proportion of masters and doctors is as high as 80%. The talent pool enables us to develop a series of proprietary 3D digital measurement systems. Our product line stretches from metrology-grade online and offline equipment and consumer-grade color 3D scanners, which are widely applied in areas of aerospace, automotive/rail transport, mechanical manufacturing, medical care and rehabilitation, digital arts for TV and film, education and research, cultural heritage protection, 3D printing and VR/AR. SCANTECH helps companies fulfill optimized solutions to quality and efficiency and open up a vast territory for 3D digitalization.

All-Round 3D Digital Solution

ScanTech 3D measurement system offers professional measurement technology for various industries.



Rapid Prototyping



Reverse Engineering



3D Inspection



3D Visualization

AXE-BII 3D Scanner

Premier Choice for Large-scale 3D Measurement



SCANTECH (HANGZHOU) CO., LTD
Building 12, No.998, West Wenyi Road, Yuhang District, Hangzhou,
Zhejiang Province,310000 China
Tel:0086-571-85852597 Fax:0086-571-85370381
E-mail : info@3d-scantech.com
Website : www.3d-scantech.com

SCANTECH™

Authorized Distributor

Copyright ©

SCANTECH (HANGZHOU) CO., LTD



AXE-B11

AXE-B11 3D scanner opens up a new 3D experience to large-scale 3D measurement without extra device.

The 11 crossed blue lasers greatly increase measurement rate to 1,300,000 measurements/s. And the single blue laser line can rapidly obtain 3D data of deep hole and inaccessible positions of complex objects.

The built-in photogrammetry function can scan large-scale objects with ultra-high accuracy individually.

Accurate Measurement

The built-in photogrammetry system greatly improves the volumetric accuracy up to 0.020 mm/m and accuracy up to 0.020 mm. AXE-B11 offers professional 3D scanning for large-volumes without an extra device.

Double Scanning Mode

Due to 11 crossed blue lasers + 1 extra blue laser line, AXE-B11 supports high-efficiency mode for large-scale scanning and single line scanning mode to meet special requirements, such as deep hole and dead angle inspection.

Super-efficiency

The ultra-fast speed facilitates the process of measuring large volume by 1,300,000 measurements/s, saving numerous working time and labor cost. With 550 mm × 600 mm of scan area, it only needs very few markers to finish the scanning.

Versatile Combination

AXE-B11 fulfills different measurement demands by freely matching with the accurate reference bar, Helpers engineer kit, etc.

Technical Parameter	
Type	AXE-B11
Laser source	11 blue laser crosses + 1 extra blue laser line
Deep hole scanning	Support
Accuracy	0.020 mm
Measurement rate	1,300,000 measurements/s
Scanning area	Up to 550 mm × 600 mm
Scanning area (photogrammetry)	2500 mm × 3000 mm
Laser class	CLASS II (eye-safe)
Resolution	0.100 mm
Volumetric accuracy (without extra device)	0.020 mm + 0.035 mm/m
Stand-off distance	450 mm
Depth of field	500 mm
Depth of field (photogrammetry)	2500 mm
Output formats	.stl, .ply, .obj, .igs, wrl, .xyz, .dae, .fbx, .ma, .asc or customized
Operating temperature range	-10 ~ 40°C
Interface mode	USB 3.0
Patents	CN204329903U, CN104501740B, CN104165600B, CN204988183U, CN204854633U, CN204944431U, CN204902788U, CN105068384B, CN105049664B, CN204902784U, CN204963812U, CN204902785U, CN204902790U, CN106403845B, CN209197685U, CN209263911U, CN206905709U, CN107202554B, US20200225030A1, US10309770B2, KR102096806B1

